

*Kaldewei style icons  
Copics on paper  
Perspective of competition phase  
20 x 17 cm  
2010*

**Alexander Radoske**

Born Karaganda, Kazakhstan, 1966. Admitted to study architecture at the St. Petersburg Academy of Art, but interrupted his studies to do military service from 1984 to 1986. Emigrated to Germany with his family in 1989.

In 1990, began additional studies at the architectural faculty of the Technische Hochschule Darmstadt. Graduated in 1994, and worked on various projects in Germany and Russia.

In 1997, he and Bernd Hollin set up a practice in Frankfurt am Main, Hollin + Radoske, specialising in structural engineering projects in Germany and international interior design. Today, it is one of the city's best-known interior design firms.

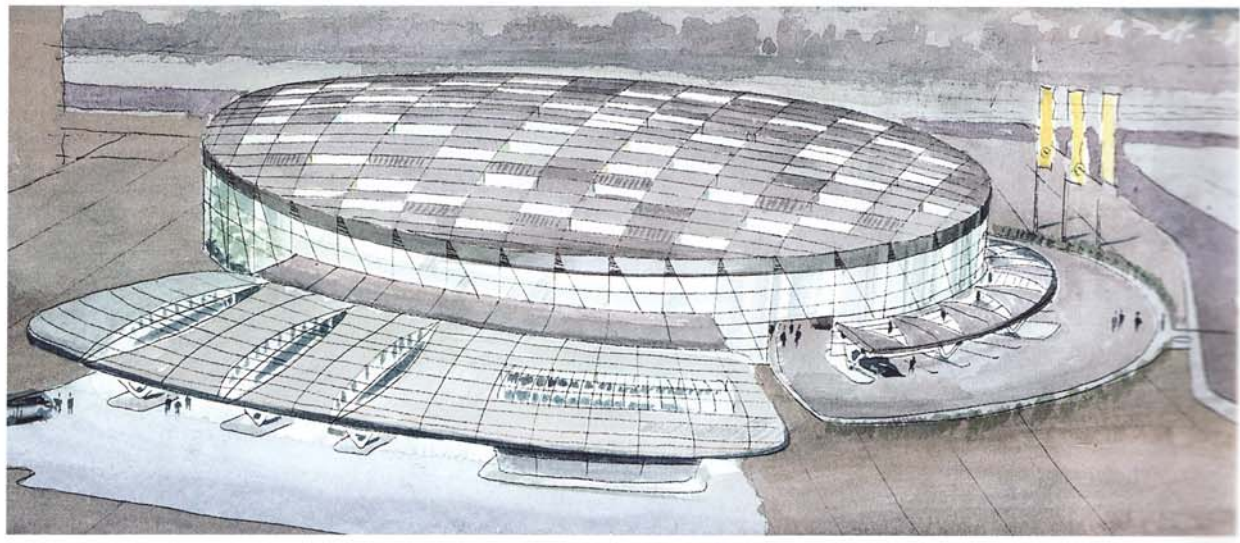


*Above: Lufthansa HON Circle Lounge*  
*Watercolour on paper*  
*Perspective*  
*26 x 17 cm*  
*2003*

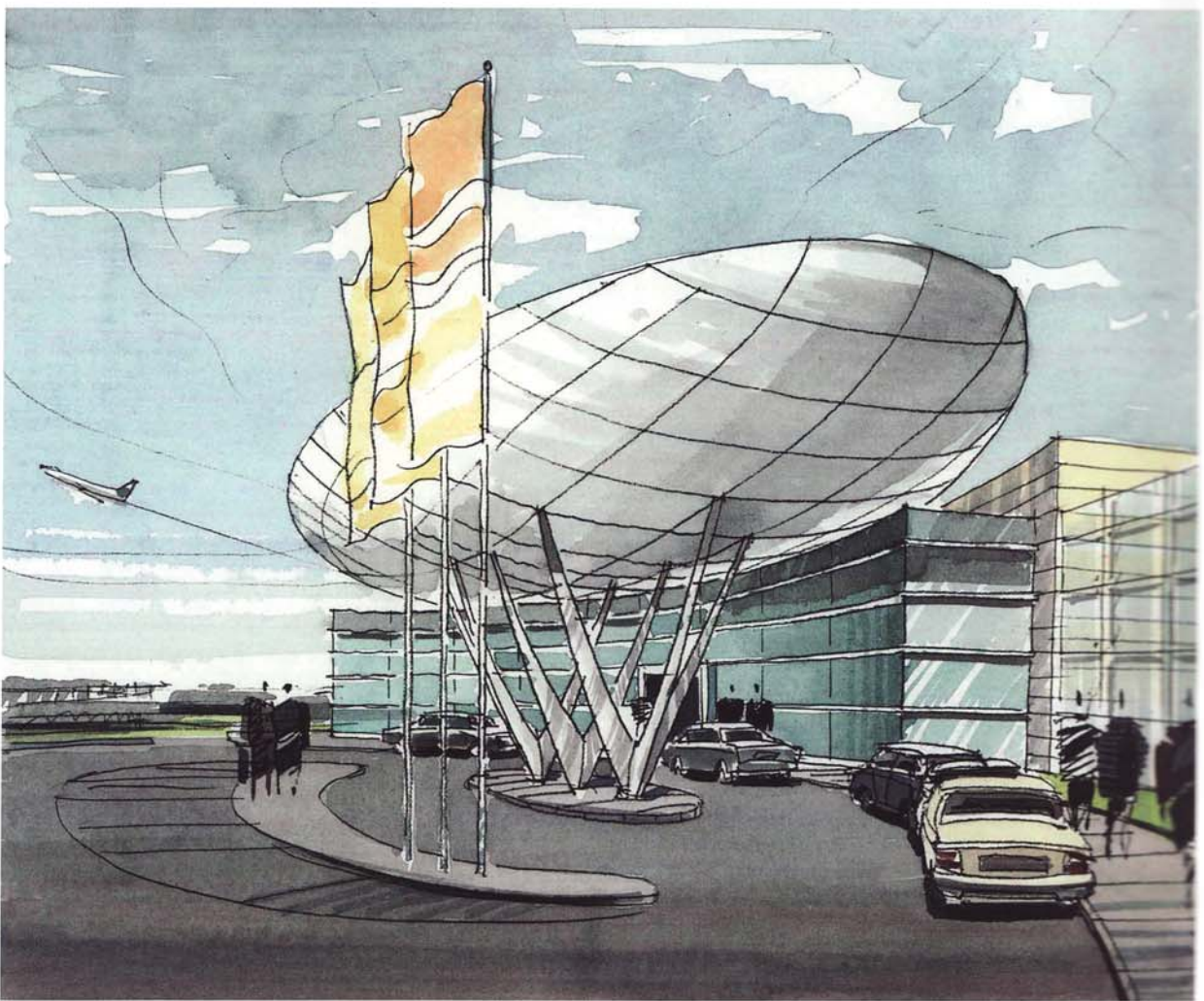
*Below: Lufthansa HON Circle Lounge*  
*Copics on paper*  
*Perspective*  
*25 x 13 cm*  
*2004*

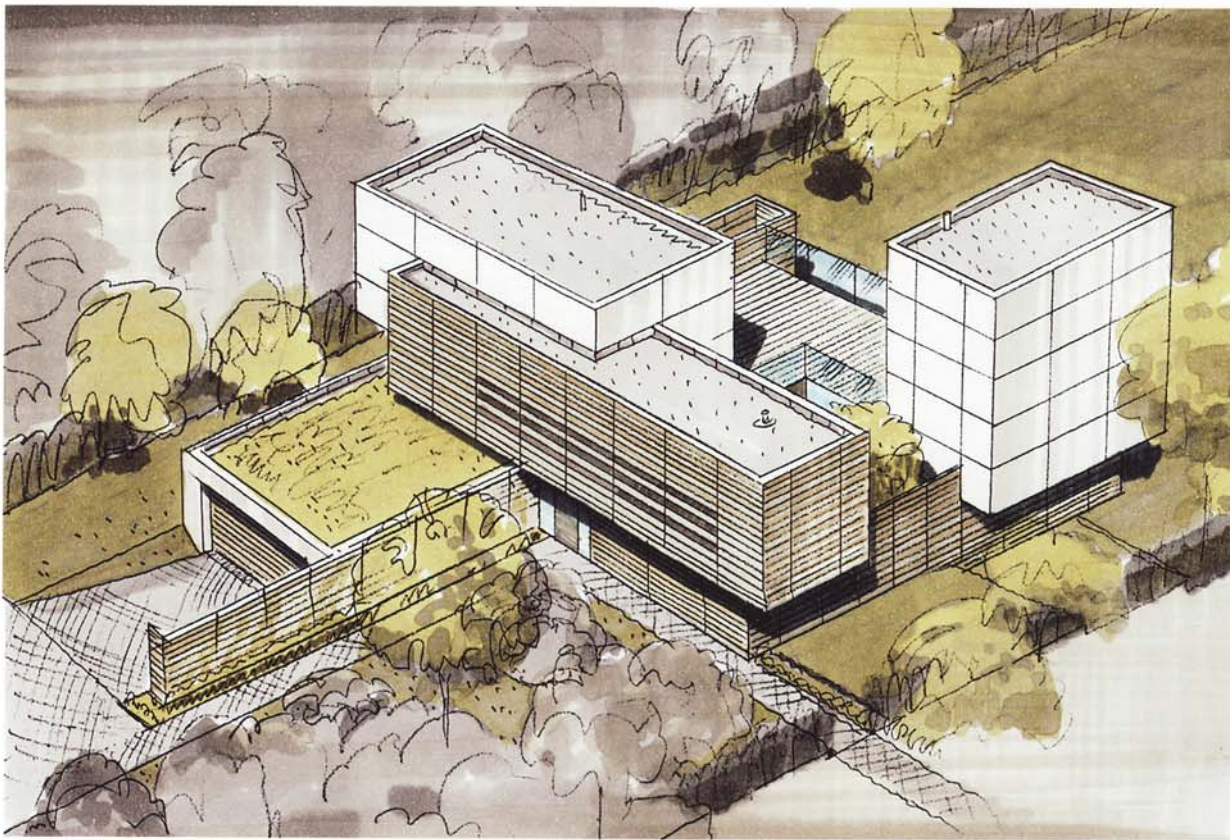


Lufthansa First Class Terminal,  
Frankfurt  
Watercolour on paper  
Perspective of competition phase  
30 x 13 cm  
2003

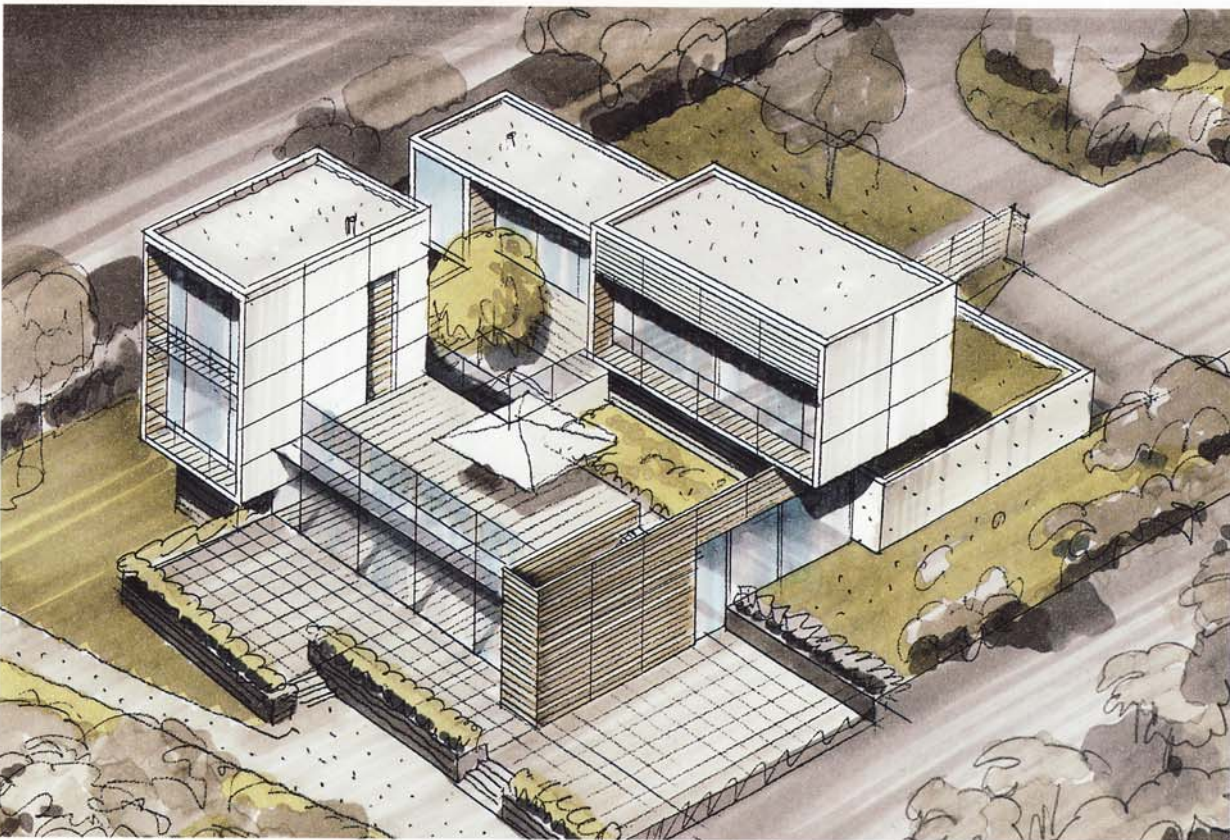


Lufthansa First Class Terminal,  
Frankfurt  
Watercolour on paper  
Perspective of competition phase  
20 x 17 cm  
2003

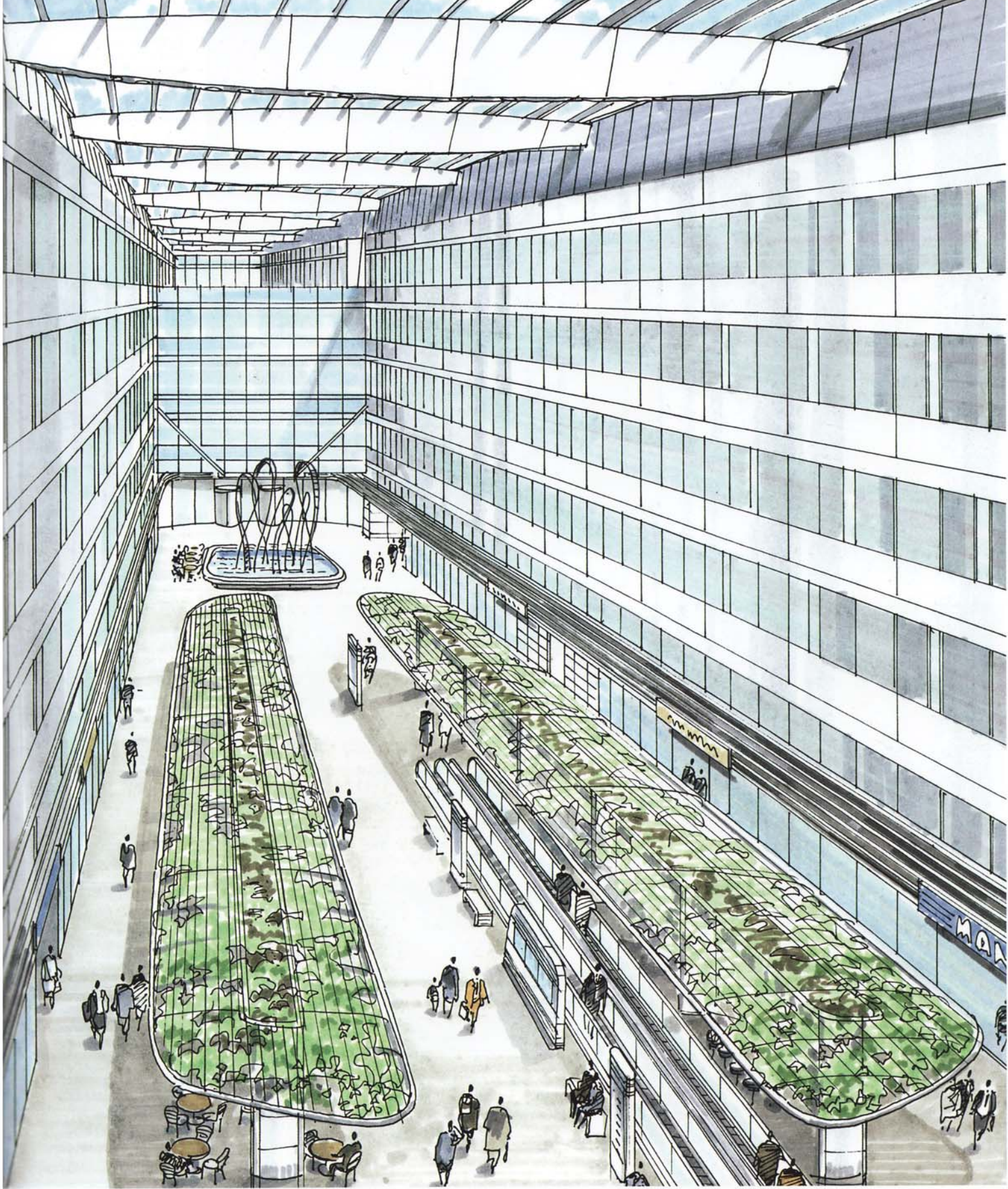




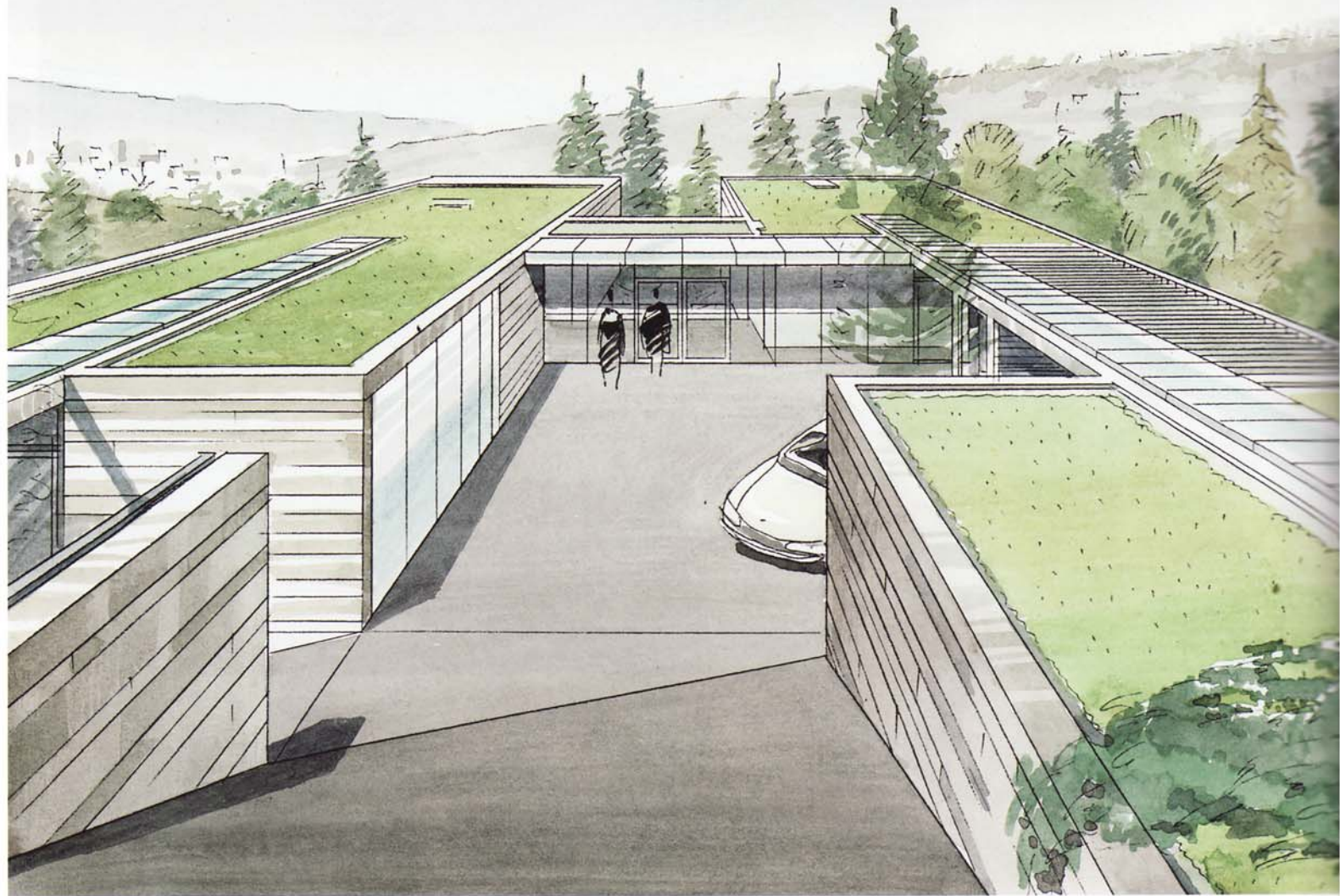
Villa, Moscow  
Copics on paper  
Bird's-eye view  
26 x 18 cm  
2008



Villa, Moscow  
Copics on paper  
Bird's-eye view  
25 x 16 cm  
2008



# Alexander Radoske



*Above: Ambassador's residence, Sofia  
Watercolour on paper  
Perspective of the competition phase  
25 x 18 cm  
2005*

*Right: Airrail Center, Frankfurt  
Copics on paper  
Perspective of competition phase, atrium design  
27 x 12 cm  
2005*